



# ICBO-BioCreative 2016

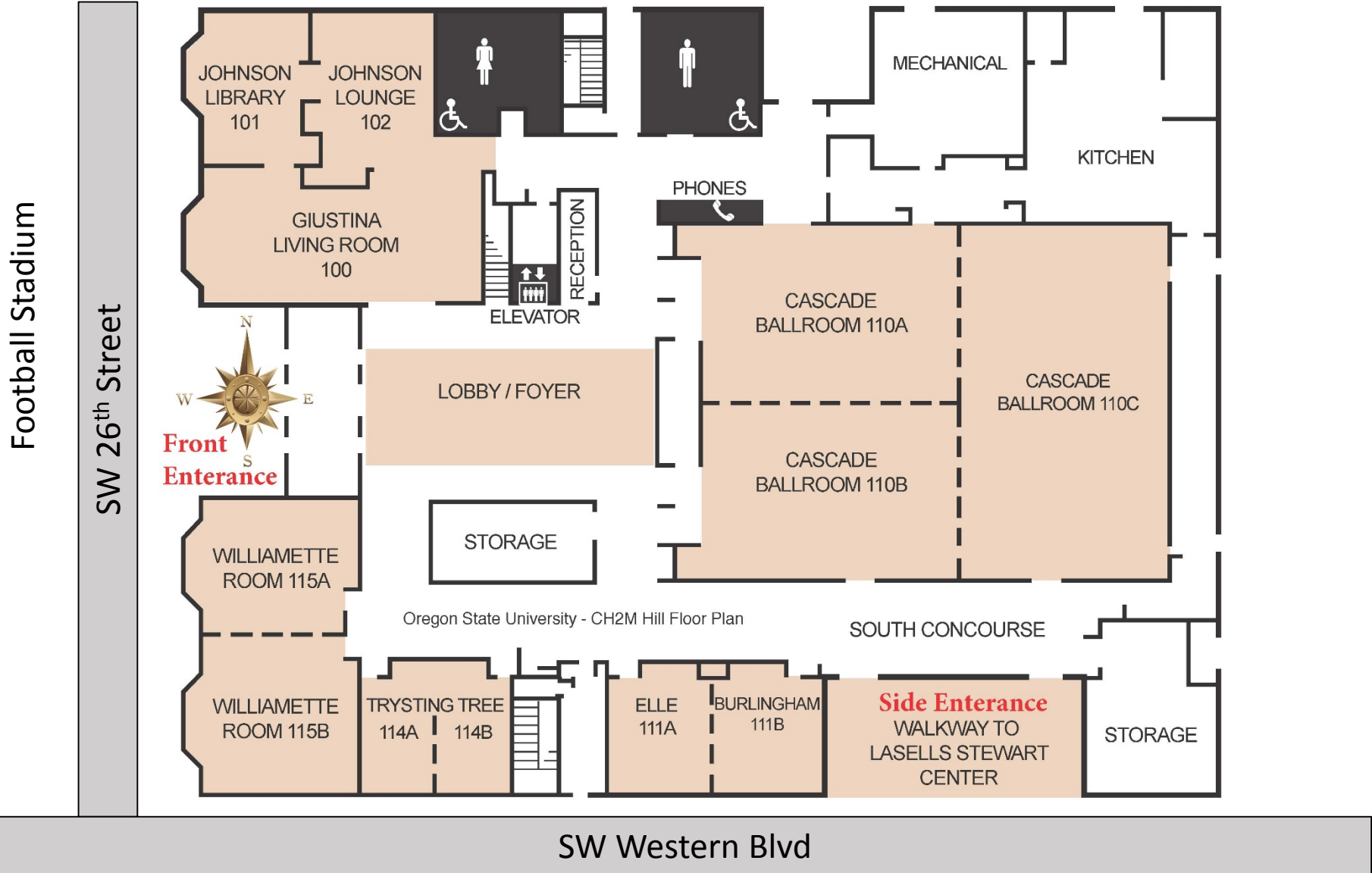
## Venue Map & Program at a Glance

Program details at [www.icbo-conference.org](http://www.icbo-conference.org)

August 1-4, 2016

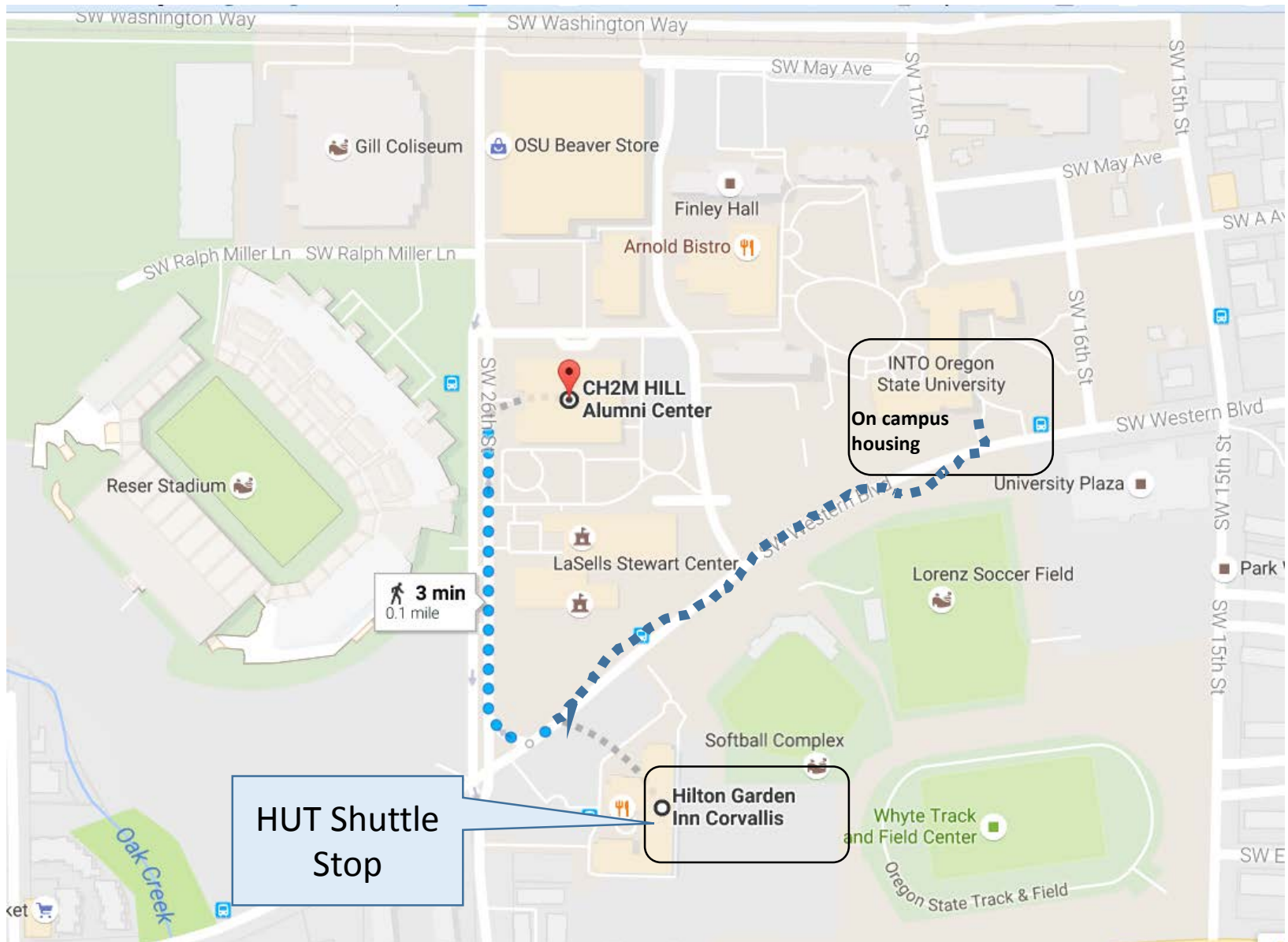
# CH2M HILL Alumni Conference Center

725 SW 26th St, Corvallis, OR 97331, USA







# Directions to the venue

<http://icbo.cgrb.oregonstate.edu/traveling>



Day-1, Monday August 1, 2016

ICBO & BioCreative 2016

Time	Lobby	Cascade Ballroom 110ABC	Elle-Burlingham Room 111AB	Trysting Tree Room 114AB	Willamette Room 115AB	Boardroom (Upstairs)
8:00am onwards	Conference registration opens					
8:00am-9:00am	Breakfast					
9:00am-9:15am		<b>Welcome</b>				
9:15am-10:15am		<b>Keynote Address</b> William (Bill) Hersh, MD, Oregon Health & Science University (OHSU)				
10:15am-10:30am	Coffee Break	Poster Setup				
10:30am-12:30pm		<b>BioCreative Plenary Session #1</b> Text mining-facilitated models of curation	<b>ICBO Workshop W01</b> Novel approaches to visualizing big data sets (PART I) 	<b>ICBO Workshop W02</b> OmniSearch and Beyond: ontology-based biomedical information integration and knowledge acquisition for miRNAs	<b>ICBO Workshop W03</b> Integrating Ontological and Genomic Analysis with Galaxy	<b>ICBO Workshop W04</b> Representing social and legal entities in the biomedical domain (PART I) 
12:30pm-1:30pm	Lunch	Poster Setup				
1:30pm-3:30pm		<b>BioCreative Plenary Session #2</b> Text mining in precision medicine	<b>ICBO Workshop W01</b> Novel approaches to visualizing big data sets (PART II)	<b>ICBO Workshop W05</b> Vaccine and Drug Ontology Studies (PART-I) 	<b>ICBO Workshop W06</b> OBO Tutorial: Open Biological and Biomedical Ontologies in Action	<b>ICBO Workshop W04</b> Representing social and legal entities in the biomedical domain (PART II)
3:30pm-4:00pm	Coffee Break	Poster Setup				
4:00pm-6:00pm		<b>BioCreative Plenary Session #3</b> Domain portability or generalizability across medical literature	<b>ICBO Workshop W07</b> Topics in OWL Reasoning for BFO- based Ontologies	<b>ICBO Workshop W05</b> Vaccine and Drug Ontology Studies (PART-II)	<b>ICBO Workshop W08</b> Noctua: An all in one solution for ontology development and annotation (Contd. in Demo D105) 	<b>ICBO Workshop W09</b> OBI-ECO Interactions & Evidence
6:00pm	<b>ICBO and BioCreative Joint Posters and Demo Session #1</b> Posters: All (BioCreative and ICBO)   Demo: D101-105					
6:00pm	ICBO and BioCreative Joint Evening Mixer					

Day-2, Tuesday August 2, 2016

ICBO & BioCreative 2016

Time	Lobby/Foyer	Cascade Ballroom 110ABC
8:00am onwards	Conference registration opens	
8:00am-9:00am	Breakfast	Poster Setup and Viewing
9:00am-9:15am		<b>Welcome</b>
		<b>Keynote Address</b> Christopher Daly, Oregon State University
10:15am-10:30am	Coffee Break	Poster Setup
10:30am-12:30pm		<b>Joint ICBO and BioCreative Plenary Session #1 (Special Topic)</b> Natural Language Processing & Data Mining with Ontologies
12:30pm-1:30pm	Lunch	Poster Setup and Viewing
1:30pm-3:30pm		<b>ICBO Plenary session #2 (Special Topic)</b> SDGIO: Sustainable Development Goals Interface Ontology--Semantics for Sustainability
3:30pm-4:00pm	Coffee Break	Poster Setup and Viewing
4:00pm-6:00pm		<b>ICBO Plenary session #3 Invited &amp; Flash Talks</b> <ul style="list-style-type: none"> <li>• 4-5pm: Invited Talks (Special Topic) <ul style="list-style-type: none"> <li>○ Tom Sharpton, Oregon State University</li> <li>○ Benjamin Dalziel, Oregon State University</li> </ul> </li> <li>• 5-6pm: Flash Talks - Poster presenters</li> </ul>
6:00pm		<b>Posters and Demo Session #2</b> <ul style="list-style-type: none"> <li>• Posters: All</li> <li>• Demo: D201-205</li> </ul>
6:00pm	Evening Mixer	

Day-3, Wednesday August 3, 2016

ICBO & BioCreative 2016

Time	Lobby/Foyer	110A/B & C
8:00am onwards	Conference registration opens	
8:00am-9:00am	Breakfast	
9:00am-9:15am		<b>Welcome</b>
		<b>Keynote Address</b> Dennis Stevenson, New York Botanical Garden
10:15am-10:30am	Coffee Break	
10:30am-12:30pm		<b>ICBO Plenary session #4</b> Ontology Development and Application
12:30pm-1:30pm	Lunch	Poster Viewing
1:30pm-3:30pm		<b>ICBO Plenary session #5</b> Ontology-based applications
3:30pm-4:00pm	Coffee Break	
4:00pm-5:00pm		<b>ICBO Panel Discussion</b>
5:00pm-6:00pm		<b>Posters &amp; Demo Session</b> Posters: All Demo: Your call
5:00pm-6:00pm	ICBO Steering Committee meeting (location Room 114AB)	
6:00pm	Assemble and Board buses to the Conference Dinner site (Transport provided)	
6:30pm	Conference Dinner (Offsite at Tye Wine Cellars, 26335 Greenberry Rd, Corvallis, OR 97333   Bring registered accompanying guests. Kids welcome to join)	

Day-4, Thursday August 4, 2016

ICBO & BioCreative 2016

Time	Lobby	Cascade Ballroom 110ABC	Elle-Burlingham Room 111A	Elle-Burlingham Room 111B	Trysting Tree Room 114AB	Boardroom
8:00am onwards	Conference registration opens					
8:00am-9:00am	Breakfast					
8:30am-10:30am		<b>ICBO Plenary Session #6</b> (check, this starts early) Title: Semantics and interoperability				
10:30am-10:45am	Coffee Break					
10:45am-12:30pm		<b>ICBO Plenary Session #7</b> Title: Data annotation, standards and computational reasoning				
12:30-12:45		<b>CLOSING</b>				
12:45pm-1:30pm	Lunch	Remove all Posters				
1:30pm-4:00pm		<b>ICBO Workshop W10</b> An introduction to the Evidence and Conclusion Ontology and representing evidence in scientific research	<b>ICBO Workshop W11</b> Development of a Global Food Ontology (Farm to Fork)	<b>ICBO Workshop W12</b> Tools and Applications for Data Standards and Knowledge Sharing in Plant Biodiversity	<b>ICBO Workshop W13</b> Semantic Metadata with ISO 11179 Metadata Registry Standard	<b>ICBO Workshop W14</b> Fourth International Workshop on Definitions in Ontologies (IWOOD 2016)
3:30pm-4:00pm	Coffee Break					
Evening	Plan activities on your own Dinner (on your own)					